

# WE ARE OTR

## 青岛通达橡胶制品厂

Qingdao Tongda Rubber Products Factory

Add: Qianlou Industrial Park, Pingdu, Qingdao, China

[www.tongdatyre.com](http://www.tongdatyre.com)

Email: [sales08@tongdatyre.com](mailto:sales08@tongdatyre.com)

Mobile/Whatsapp/Wechat: 0086 185 6137 8387



QINGDAO TONGDA RUBBER PRODUCTS FACTORY  
»» CATALOGUE

# »» ABOUT TONGDA

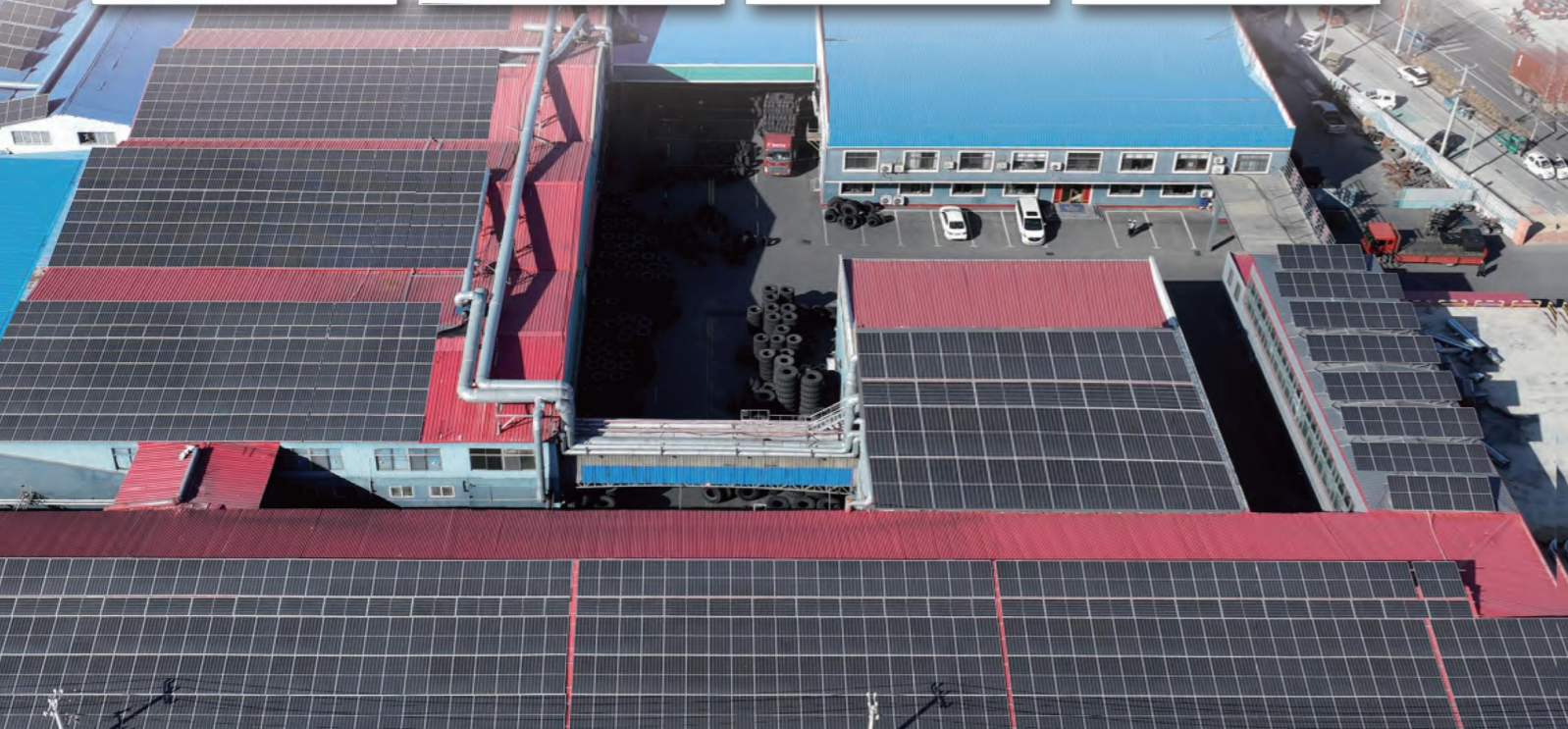
Established in 1998, Qingdao Tongda Rubber Products Factory, is located in Qianlou Industrial Park, Qingdao, China. It is a professional nylon tyre enterprise with 4 brands: VROTR, V-OTR, SONEARTH and VIN-WIN. Tongda focuses on energy saving, safe production and technology innovation of OTR tyre, Industrial tyre, solid tyre, etc, forming a large-scale production line with thousands of patterns and specifications.

Tongda has a strong R & D team, and invests the first green rubber mixing project in Asia — Qingdao Xinghang Mixing Center with the most advanced rolling equipment imported from Italy. It is equipped with a number of automatic capsule reverse packing machines, sophisticated production facilities so as to provide all-round technical support.

It has been qualified with ISO9001, and was granted the certificate of DOT, CCC, etc. The company is committed to high standards, high quality, high performance and high output. At present, the production capacity of rubber tires has reached 1 million per year.

According to customer needs in different markets, the factory will add new series, new molds and new patterns every year. In the domestic market, it is mainly based on OEM, and has long-term stable cooperation with a number of excavator, loader and bulldozer factories.

With over-20-years continuous efforts, Tongda has become a professional OTR tire and Industrial tire manufacturer, exporting to over 150 countries and regions in Southeast Asia, Middle East, Africa, America and Europe, and enjoyed high recognition and reputation at home and abroad.



# CONTENTS

## OFF THE ROAD TYRE 01~05

G-2/L-2,E-3/L-3,L-5,L-5S,MINING,R-3,C-1

## SKIDSTEER TYRE 05

SKS-1,SKS-2,SKS-3,SKS-4,SKS-5,SKS-6,SKS-7

## BACKHOE TYRE 06~08

EXCAVATOR,E-2A,R-4,R-4A,R-4B,R-4C,F3

## FORKLIFT TYRE 09

FORKLIFT

## SOLID TYRE 10

SD-101,SD-102,SD-103,SD-104

## SAND TYRE 11

E-7,E-2,E-7/E-7A

## AGRICULTURAL TYRE 12~16

R-1,R-1W,IRRIGATION,R-2,R-1S,F-2 4 RIB,F-2,I-1

## IMPLEMENT TYRE 17~19

IMP-500,I-3,AG-200,IMP-600,IMP-700,IMP-800,IMP-900

## TRUCK TYRE 19~20

T-100,LUG,RIB



**E-3/L-3**

**G-2/L-2**

## GRADER TYRE

SIZE	PR	TYRE	OVERALL DIAMETER[MM]	SECTION WIDTH[MM]	STANDARD RIM	INFLATED PRESSURE[KPA]	MAX LOAD[KGS]
13.00-24	12PR	TT/TL	1280	330	8.00TG	300	2725
	16PR	TT/TL	1280	330	8.00TG	325	3075
14.00-24	20PR	TT/TL	350	360	8.00TG	250	3075
	24PR	TT/TL	1370	360	8.00TG	350	8500
15.5-25	12PR	TT/TL	1275	395	12.00/1.3	250	2650
17.5-25	12PR	TT/TL	1350	445	14.00/1.5	200	2900
	16PR	TT/TL	1350	445	14.00/1.5	280	3350
20.5-25	16PR	TT/TL	1490	520	17.00/2.0	225	4000
23.5-25	16PR	TT/TL	1615	595	19.00/2.5	200	4750
18/90-16	12PR	TT	1075	450	8.50H	450	3550
20.5/70-16	16PR	TT	955	356	10.00G	320	1785
16/70-20(405/70-20)	16PR	TT	1075	410	13	450	5600
16/70-24(405/70-24)	16PR	TT	1175	410	13	450	5600



**E-3/L-3**

**E-3/L-3B**

## LOADER TYRE

SIZE	PR	TYRE	OVERALL DIAMETER[MM]	SECTION WIDTH[MM]	STANDARD RIM	INFLATED PRESSURE[KPA]	MAX LOAD[KGS]
7.50-16	10PR	TT	805	215	6.00/G	530	860
8.25-16	12PR	TT	865	235	6.50H	350	1445
9.00-16	14PR	TT	890	255	6,5H	260	1120
1200-16	16PR	TT	840	240	6,5H	680	1705
14/90-16	12PR	TT	896	350	8.50H	390	2250
20.5/70-16	16PR	TT	1070	320	10	350	2850
23.5/70-16	16PR	TT	1075	320	10	350	2850
16/70-20	16PR	TT	1075	410	13	450	5600
16/70-24	16PR	TT	1175	410	13	450	6050
15.5-25	16PR	TT/TL	1275	395	12.00/1.3	525	6750
	16PR	TT/TL	1350	445	14.00/1.5	475	7300
17.5-25	20PR	TT/TL	1350	445	14.00/1.5	575	8250
	24PR	TT/TL	1350	445	14.00/1.5	700	9250
	16PR	TT/TL	1490	520	17.00/2.0	350	8250
20.5-25	20PR	TT/TL	1490	520	17.00/2.0	450	9500
	24PR	TT/TL	1490	520	17.00/2.0	525	10300
23.5-25	20PR	TT/TL	1615	595	19.50/2.5	375	10900
	24PR	TT/TL	1615	595	19.50/2.5	475	12500
	28PR	TT/TL	1615	595	19.50/2.5	550	13600
26.5-25	28PR	TT/TL	1750	675	22.00/3.0	475	15500
	32PR	TT/TL	1750	675	22.00/3.0	550	17000
29.5-25	28PR	TT/TL	1875	750	25.00/3.5	425	17500
	32PR	TT/TL	1875	750	25.00/3.5	525	20000
13.00-24	12PR	TT/TL	1350	350	10	450	5600
	20PR	TT/TL	1370	375	10	700	8500
14.00-24	24PR	TT/TL	1370	375	10	850	8500
	28PR	TT/TL	1370	375	10	925	10000
	24PR	TT/TL	1495	430	11.25/2.0	650	10600
16.00-24	28PR	TT/TL	1495	430	11.25/2.0	750	11500
	24PR	TT/TL	1370	375	10.00/1.5	850	9500
14.00-25	28PR	TT/TL	1370	375	10.00/1.5	925	10000
	32PR	TT/TL	1370	375	10.00/1.5	1050	10900
	28PR	TT/TL	1495	430	11.25/2.0	750	11500
16.00-25	32PR	TT/TL	1495	430	11.25/2.0	875	12500
	18.00-25	32PR	1615	500	13.00/25	750	15000



## LOADER TYRE



**L-5**

SIZE	PR	TYRE	OVERALL DIAMETER[MM]	SECTION WIDTH[MM]	STANDARD RIM	INFLATED PRESSURE[KPA]	MAX LOAD[KGS]
20.5/70-16	16PR	TT/TL	955	356	10.00G	320	1785
16/70-20	16PR	TT/TL	1090	410	13	400	3150
17.5-25	16PR	TT/TL	1314	420	14.00/1.5	475	7300
20.5-25	20PR	TT/TL	1479	500	17.00/2.0	450	9500
23.5-25	28PR	TT/TL	1588	568	19.00/2.5	375	10900
26.5-25	32PR	TT/TL	1758	643	22.00/3.0	475	15500
29.5-25	32PR	TT/TL	1868	718	25.00/3.5	425	17500

## LOADER TYRE



**E-3/L-3C**

SIZE	PR	TYRE	OVERALL DIAMETER[MM]	SECTION WIDTH[MM]	STANDARD RIM	INFLATED PRESSURE[KPA]	MAX LOAD[KGS]
17.5-25	20PR	TT/TL	1350	445	14.00/1.5	575	8250
23.5-25	20PR	TT/TL	1615	595	19.50/2.5	375	10900
	24PR	TT/TL	1615	595	19.50/2.5	475	12500

## OFF THE ROAD TYRE



**MINING**

SIZE	PR	TYRE	OVERALL DIAMETER[MM]	SECTION WIDTH[MM]	STANDARD RIM	INFLATED PRESSURE[KPA]	MAX LOAD[KGS]
9.00-20	16PR	TT	1000	215	7.0	880	2900
10.00-20	18PR	TT	1005	215	7.5	910	3350
11.00-20	18PR	TT	1070	255	8.0	910	3650
12.00-20	20PR	TT	1090	265	8.5	880	4000

## OFF THE ROAD TYRE



**L-5S**

SIZE	PR	TYRE	OVERALL DIAMETER[MM]	SECTION WIDTH[MM]	STANDARD RIM	INFLATED PRESSURE[KPA]	MAX LOAD[KGS]
10.00-20	14PR	TT/TL	1069	279	8.00	650	4252
12.00-20	20PR	TT/TL	1145	315	8.50	875	6350
12.00-24	20PR	TT/TL	1245	315	8.50V	825	6900
14.00-24	24PR	TT/TL	1370	375	10.00W	850	9500
16.00-25	28PR	TL	1395	430	11.25/2.0	750	11500
18.00-25	32PR	TL	1666	523	13.00/2.5	750	15000
17.5-25	20PR	TL	1350	445	14.00/1.5	800	8250
20.5-25	20PR	TL	1490	520	17.00/2.0	450	9500
23.5-25	24PR	TL	1615	595	19.50/2.5	475	12500
26.5-25	32PR	TL	1798	673	22.00/3.0	475	15500
29.5-25	36PR	TL	1875	750	25.00/3.5	550	21200
29.5-29	36PR	TL	1975	750	25.00/3.5	550	22000

## ROAD ROLLER TYRE



**R-3**

SIZE	PR	TYRE	OVERALL DIAMETER[MM]	SECTION WIDTH[MM]	STANDARD RIM	INFLATED PRESSURE[KPA]	MAX LOAD[KGS]
23.1-26	12PR	TT/TL	1581	587	DW20	220	3875
	16PR	TT/TL	1426	467	DW16	230	6150



## ROAD ROLLER TYRE



**C-1**

SIZE	PR	TYRE	OVERALL DIAMETER[MM]	SECTION WIDTH[MM]	STANDARD RIM	INFLATED PRESSURE[KPA]	MAX LOAD[KGS]
7.50-15	14PR	TT	780	215	6	825	2850
9.00-20	16PR	TT	1018	259	7	725	4750
10.00-20	16PR	TT	1055	278	7.5	800	5300
11.00-20	16PR	TT	1085	293	8	825	5450
12.00-20	16PR	TT	1125	315	8.5	900	5600
13/80-20	16PR	TT	1060	310	8.5	800	5450
14/70-20	16PR	TT	960	360	11.00	500	4270

## EXCAVATOR TYRE



**EXCAVATOR**

SIZE	PR	TYRE	OVERALL DIAMETER[MM]	SECTION WIDTH[MM]	STANDARD RIM	INFLATED PRESSURE[KPA]	MAX LOAD[KGS]	SPEED CODE
8.25-20	14PR	TT	992	245	6.5	720	2240	G
9.00-20	18PR	TT	1030	260	7	760	2900	G
10.00-20	18PR	TT	1062	280	7.5	790	3000	G

## SKIDSTEER/EXCAVATOR TYRE



**SKS-1**

SIZE	PR	TYRE	OVERALL DIAMETER[MM]	SECTION WIDTH[MM]	STANDARD RIM	INFLATED PRESSURE[KPA]	MAX LOAD[KGS]
10-16.5	10PR	TL	773	264	8.25	520	2135
12-16.5	12PR	TL	831	307	9.75	550	2865
14-16.5	14PR	TL	921	349	10.5	550	3875
15-19.5	14PR	TL	1019	389	11.75	480	4565
23x8.5-15	6PR	TL	596	213	7	340	820
27x8.5-15	8PR	TL	686	213	7	410	1110
27x10.5-15	8PR	TL	686	267	8.5	410	1180
10.0/75-15.3	12PR	TL	760	264	9	425	1700
11L-16	12PR	TL	838	279	8	440	1250

## MILITARY TYRE



**E-2A**

SIZE	PR	TYRE	OVERALL DIAMETER[MM]	SECTION WIDTH[MM]	STANDARD RIM	INFLATED PRESSURE[KPA]	MAX LOAD[KGS]
12.00-189(320-457)	10PR	TT	1084	337	23	360	2000
12.5-20(35/80-20)	12PR	TT/TL	1145	370	20	425	2000
11.00-20	16PR	TT	1085	293	18.5	810	3250
12.00-20	18PR	TT	1145	315	22	810	3750
13.00-20	18PR	TT	1200	367	20	600	4000
14.00-20	18PR	TT	1265	375	24	670	4500
16.00-24	24PR	TT	1495	430	28	475	6150
1300x530-533	16PR	TT/TL	1300	530	24	525	4775
425/85-21	28PR	TT/TL	1210	420	12.5	650	4300



**SKS-2 SKS-3 SKS-4 SKS-5 SKS-6 G2/L2**

SIZE	PR	TYRE	OVERALL DIAMETER[MM]	SECTION WIDTH[MM]	STANDARD RIM	INFLATED PRESSURE[KPA]	MAX LOAD[KGS]
10-16.5	12PR	TL	773	264	8.25	620	2375
12-16.5	12PR	TL	831	307	9.75	620	2850/3075



## BACKHOE TYRE



**R-4**

SIZE	PR	TYRE	OVERALL DIAMETER[MM]	SECTION WIDTH[MM]	STANDARD RIM	INFLATED PRESSURE[KPA]	MAX LOAD[KGS]
14.9-24	12PR	TL	1241	378	W13	200	2300
16.9-24	12PR	TL	1309	429	W15L	200	2380
16.9-28	12PR	TL	1410	429	W15L	260	3250
18.4-26	13PR	TL	1426	467	W16L	250	4000
18.4-28	14PR	TL	1477	467	W16L	250	4100
17.5L-24	15PR	TL	1241	445	W15L	220	2800
19.5L-24	16PR	TL	1314	495	DW16L	230	3450
21L-24	14PR	TL	1378	533	DW18L	250	4200

## BACKHOE TYRE



**R-4C**

SIZE	PR	TYRE	OVERALL DIAMETER[MM]	SECTION WIDTH[MM]	STANDARD RIM	INFLATED PRESSURE[KPA]	MAX LOAD[KGS]
10.5/80-18	10PR	TL	907	274	9.00	370	1950
	12PR	TL	907	274	9.00	430	2150
12.5/80-18	12PR	TL	985	310	9.00	370	2625
	14PR	TL	985	310	9.00	430	2910

## BACKHOE TYRE



**R-4A**

SIZE	PR	TYRE	OVERALL DIAMETER[MM]	SECTION WIDTH[MM]	STANDARD RIM	INFLATED PRESSURE[KPA]	MAX LOAD[KGS]
19.5L-24	12PR	TL	1314	495	DW16L	230	3450

## BACKHOE TYRE



**F-3**

SIZE	PR	TYRE	OVERALL DIAMETER[MM]	SECTION WIDTH[MM]	STANDARD RIM	INFLATED PRESSURE[KPA]	MAX LOAD[KGS]
11L-16	10PR	TL	840	280	8LB	360	1120
	12PR	TL	840	280	8LB	440	1250
11L-15	10PR	TL	815	280	8LB	360	1060
	12PR	TL	815	280	8LB	440	1175

## BACKHOE TYRE



**R-4B**

SIZE	PR	TYRE	OVERALL DIAMETER[MM]	SECTION WIDTH[MM]	STANDARD RIM	INFLATED PRESSURE[KPA]	MAX LOAD[KGS]
12.5/80-18	12PR	TL	985	310	9.00	370	2625
16.9-24	12PR	TL	1309	429	W15L	260	3240
16.9-28	12PR	TL	1430	430	DW15	260	3450
19.5L-24	12PR	TL	1314	495	DW16L	230	3450



# FORKLIFT TYRE



**Forklift**

SIZE	PR	TYRE	OVERALL DIAMETER[MM]	SECTION WIDTH[MM]	STANDARD RIM	INFLATED PRESSURE[KPA]	MAX LOAD[KGS]
400-8	8PR	TT	422	108	2.50	960	690
18x7-8	14PR	TT	465	168	4.33	900	1450
5.00-8	10PR	TT	469	131	3.00	1000	1090
6.00-9	10PR	TT	540	160	4.00	860	1515
6.00-15	12PR	TT	705	170	4.50E	830	2185
6.50-10	10PR	TT	590	178	5.00	790	1725
7.00-9	10PR	TT	590	190	5.00	850	1865
7.00-12	12PR	TT	676	192	5.00	860	2445
7.00-15 (29x8-15)	12PR	TT	760	19	5.50	860	2870
7.50-15	12PR	TT	798	215	6.00	790	3140
8.15-15 (28x9-15)	14PR	TT	684	221	7.00	970	3075
21*8-9	14PR	TT	535	200	6.00E	900	2300
23*10-12	12PR	TT	632	200	8.00	700	3290
23*9-10	16PR	TT	584	229	7.00	800	2300
250-15	16PR	TT	735	250	7.50	850	4350
300-15	20PR	TT	840	300	8.00	930	5940
27*10-12	14PR	TT	690	250	8.00G	750	3620
8.25-12	12PR	TT	765	235	6.50	720	3060
8.25-15	12PR	TT	834	236	6.50	720	3545
9.00-20	14PR	TT	1038	259	7.00	760	5195
10.00-20	16PR	TT	1073	278	7.50	790	6085
12.00-20	18PR	TT	1146	315	8.50	900	8360



# SOLID TYRE



**SD101**



**SD102**



**SD103**



**SD104**

SIZE	TYRE	OVERALL DIAMETER[MM]	SECTION WIDTH[MM]	RIM	LOAD CAPACITY /KG				OTHER FORKLIFT
					BALANCE FORKLIFT				
					10KM/H		16KM/H		16KM/H
					DRIVE	STEER	DRIVE	STEER	
4.00-8	SOLID	423	115	3.00/3.75	1055	845	1020	765	730
15x4 1/2-8	SOLID	380	106	3.25/3.00	905	725	675	655	625
5.00-8	SOLID	469	126	3.00	1210	970	1175	880	840
16x6-8	SOLID	418	156	4.33	1500	1200	1445	1085	1035
18x7-8	SOLID	457	165	4.33	2350	1880	2265	1700	1620
21x8-9	SOLID	535	189	6.00	2810	2250	2715	2035	1940
23x9-10	SOLID	595	230	6.50	4005	3205	3845	2885	2765
23x10-12	SOLID	595	237	8.00	3980	3420	3820	3210	2980
27x10-12	SOLID	683	235	8.00	4465	3570	4315	3235	3080
6.00-9	SOLID	545	140	4.00	1920	1535	1855	1390	1325
6.50-10	SOLID	597	157	5.00	2840	2110	2545	1910	1820
200/50-10	SOLID	458	198	6.50	2370	1900	2290	1720	1630
6.50-16	SOLID	743	179	5.50	3545	2725	3235	2490	2350
7.00-9	SOLID	578	170	5.00	2370	2015	2805	1925	1785
7.00-12	SOLID	683	168	5.00	3015	2410	2910	2185	2075
7.00-15(29x8-15)	SOLID	759	178	5.50/6.00	3590	2870	3465	2600	2475
7.50-15	SOLID	774	215	5.50/6.00/6.50	3690	2950	3425	2570	2450
7.50-16	SOLID	819	181	5.50/6.00	3910	3130	3780	2835	2700
7.50-20	SOLID	935	218	6.50	5165	4130	4985	3740	3560
8.15-15(28x9-15)	SOLID	706	207	7.00	4090	3270	3945	2960	2820
8.25-12	SOLID	735	206	6.50	3325	2660	3215	2410	2295
8.25-15	SOLID	847	205	6.50	4940	3950	4765	3575	3045
8.25-20	SOLID	902	218	6.50	5425	4340	5420	3930	3475
250-15	SOLID	735	226	7.00/7.50	4366	3400	4220	3160	3010
300-15	SOLID	838	258	8.00	5990	4700	5780	4335	4130
9.00-16	SOLID	884	218	6.50	5135	4110	4965	3725	3550
9.00-20	SOLID	1038	238	6.50/7.00	6450	5160	6235	4675	4450
10.00-20	SOLID	1073	240	7.50/8.00	7240	5795	6995	5240	4995
11.00-20	SOLID	7075	252	8.00	7560	6050	7300	5490	5210
12.00-20	SOLID	1146	290	8.00/8.50	8800	7000	8500	6925	6595
17.5-25	SOLID	1327	413	14.00/1.5	13000	10500	11000	8000	12220
20.5-25	SOLID	1495	530	17.00/20	24510	19600	17750	13500	
23.5-25	SOLID	1570	543	19.5/25	19500	14500	17000	13000	21260

## SAND TYRE



**E-7**

SIZE	PR	TYRE	OVERALL DIAMETER[MM]	SECTION WIDTH[MM]	STANDARD RIM	INFLATED PRESSURE[KPA]	MAX LOAD[KGS]
14.00-20	18PR	TT/TL	1220	375	9.0	245	4125
16.00-20	18PR	TT/TL	1323	419	15.0	245	5450
9.00-16	8PR	TT/TL	850	245	11.0	245	1700



**E-2**

## DESERT TYRE

SIZE	PR	TYRE	T.D.[MM]	STD.RIM	MAX LOAD[KG]	INFLATED PRESSURE[KPA]	S.W.[MM]	O.D.[MM]
66×43.00-25	24PR	TT	47	36.0TH	10000	380	1054	1650
	20PR	TT	47	36.0TH	8800	345	1054	1650



**E-7/E-7A**

## DESERT TYRE

SIZE	PR	TYRE	T.D.[MM]	STD.RIM	MAX LOAD[KG]	INFLATED PRESSURE[KPA]	S.W.[MM]	O.D.[MM]
66×44.00-25	32PR	TT	16	36.0TH	11185	480	1118	1702
	24PR	TT	10	36.0TH	10000	380	1118	1702
	20PR	TT	10	36.0TH	7020	345	1118	1702

## AGRICULTURAL TYRE

**R-1**



SIZE	PR	TYRE	OVERALL DIAMETER[MM]	SECTION WIDTH[MM]	STANDARD RIM	INFLATED PRESSURE[KPA]	MAX LOAD[KGS]
6.00-16	8PR	TT	745	165	4.50E/5.00F	250	495
6.50-14	8PR	TT	705	170	4.50J	320	660
6.50-16	8PR	TT	760	170	4.50E	340	630
6.50-20	8PR	TT	860	170	5.00F	310	725
7.50-16	8PR	TT	810	205	5.50F/5.00F	210	650
7.50-18	8PR	TT	860	205	5.50F	370	945
7.50-20	8PR	TT	910	205	5.50F	370	1020
8.3-20	8PR	TT	950	210	W7	250	880
8.3-22	8PR	TT	970	210	W7	240	810
8.3-24	8PR	TT	995	210	W7	240	810
8.5-20	8PR	TT	895	210	W7	250	780
900-16	8PR	TT	845	234	6.50H	310	1090
9.5-20	8PR	TT	950	240	W8	280	955
9.5-22	8PR	TT	970	210	W7	240	810
9.5-24	8PR	TT	1050	240	W8	280	1110
11-32	8PR	TT	1360	305	W10	140	1000
11-38	8PR	TT	1540	305	W10	160	1545
11.2-24	8PR	TT	1105	285	W10/W9	180	1045
11.2-28	10PR	TT	1205	285	W10	240	1305
11.2-38	10PR	TT	1459	285	10.00	120	1055
12-38	10PR	TT	1563	298	11	140	1570
12.4-24	8PR	TT	1160	315	W11	230	1415
12.4-28	8PR	TT	1205	315	W10/W9	180	1115
12.4-36	8PR	TT	1465	315	W11	280	1750
13.6-24	10PR	TT	1210	345	W12	250	1790
13.6-28	10PR	TT	1310	345	W12	250	1910
13.6-38	10PR	TT	1565	345	W12	250	2215
14.9-24	10PR	TT	1265	378	W13	180	1760
14.9-26	10PR	TT	1400	378	W13	180	1820
14.9-28	10PR	TT	1365	378	W13	140	1610
14.9-30	10PR	TT	14145	378	W13	230	2190
15-24	10PR	TT	1310	400	W14	280	2800
15.5-38	10PR	TT	1570	395	W14L	230	2320
16.9-24	10PR	TT	1335	429	W15L	200	1960
16.9-28	12PR	TT	1435	430	W15L	240	2575
16.9-30	12PR	TT	1485	430	W15L	170	2245
16.9-34	12PR	TT	1585	430	W15L	200	2605
16.9-38	12PR	TT	1685	430	W15L	200	2760
18.4-26	10PR	TT	1450	467	DW16	180	2645
18.4-30	12PR	TT	1550	465	DW16A	180	2815
18.4-34	12PR	TT	1650	465	W16L	180	2990
18.4-38	12PR	TT	1755	467	W16L	180	3165
18.4-32	12PR	TT	1857	467	W16	180	3330
20.8-38	12PR	TT	1835	528	W18L	160	3475
20.8-42	12PR	TT	1935	528	W18L	190	3750
23.1-26	12PR	TT	1605	587	DW20	170	3250
23.1-30	12PR	TT	1707	587	DW20	170	3450
23.1-34	14PR	TT	1870	587	DW21	200	4450
24.5-32	12PR	TT	1803	622	DW21	170	4000
28L-26	14PR	TT	1615	715	DW25A	170	4250

## AGRICULTURAL TYRE



**R-1W**

SIZE	PR	LOAD INDEX	OVERALL DIAMETER[MM]	SECTION WIDTH[MM]	STANDARD RIM	INFLATED PRESSURE[KPA]	MAX LOAD[KGS]
600/65R28	TL	147A8/147B	1491	591	DW18	160	3075
800/65R31	TL	181A8/181B	1853	798	DW25/DW27B/DH27B	360	8250
710/70R38	TL	166A6/166B	1959	716	W23	160	5300
280/85R24	TL	115A8/119B	1086	282	W9/W10	160	1215
320/85R24	TL	122A8/119B	1154	319	W9/W10/W11	160	1500
340/85R28	TL	127A8/124B	1188	343	W11/W12	160	1750
380/85R24	TL	131A8/128B	1256	380	W11/W12/W13	160	1950
380/85R28	TL	133A8/130B	1350	389	W12/W13	160	2060
420/85R28	TL	139A8/136B	1425	418	W13	160	2430
420/85R30	TL	140A8/137B	1476	418	W13	160	2500
420/85R34	TL	142A8/139B	1578	418	W13	160	2650
460/85R30	TL	145A8/142B	1527	488	W15L	160	2900
460/85R34	TL	147A8/144B	1649	491	W15L	160	3075
460/85R38	TL	149A8/146B	1750	485	W15L	160	3250
520/85R38	TL	155A8/152B	1857	560	W18L	160	3875
520/85R42	TL	157A8/154B	1969	560	DW18L	160	4125
380/90R46	TL	149A8/149B	1852	380	W12	240	3250
300/95R46	TL	148A8/148B	1717	305	W9	400	3150
460/70R24 IND	TL	152A8/152B	1254	455	DW14L/DW15L/DW16L	320	3550
500/70R24 IND	TL	164A8/164B	1310	505	DW15L/DW17L	400	5000

## IRRIGATION TYRE



**IRRIGATION**

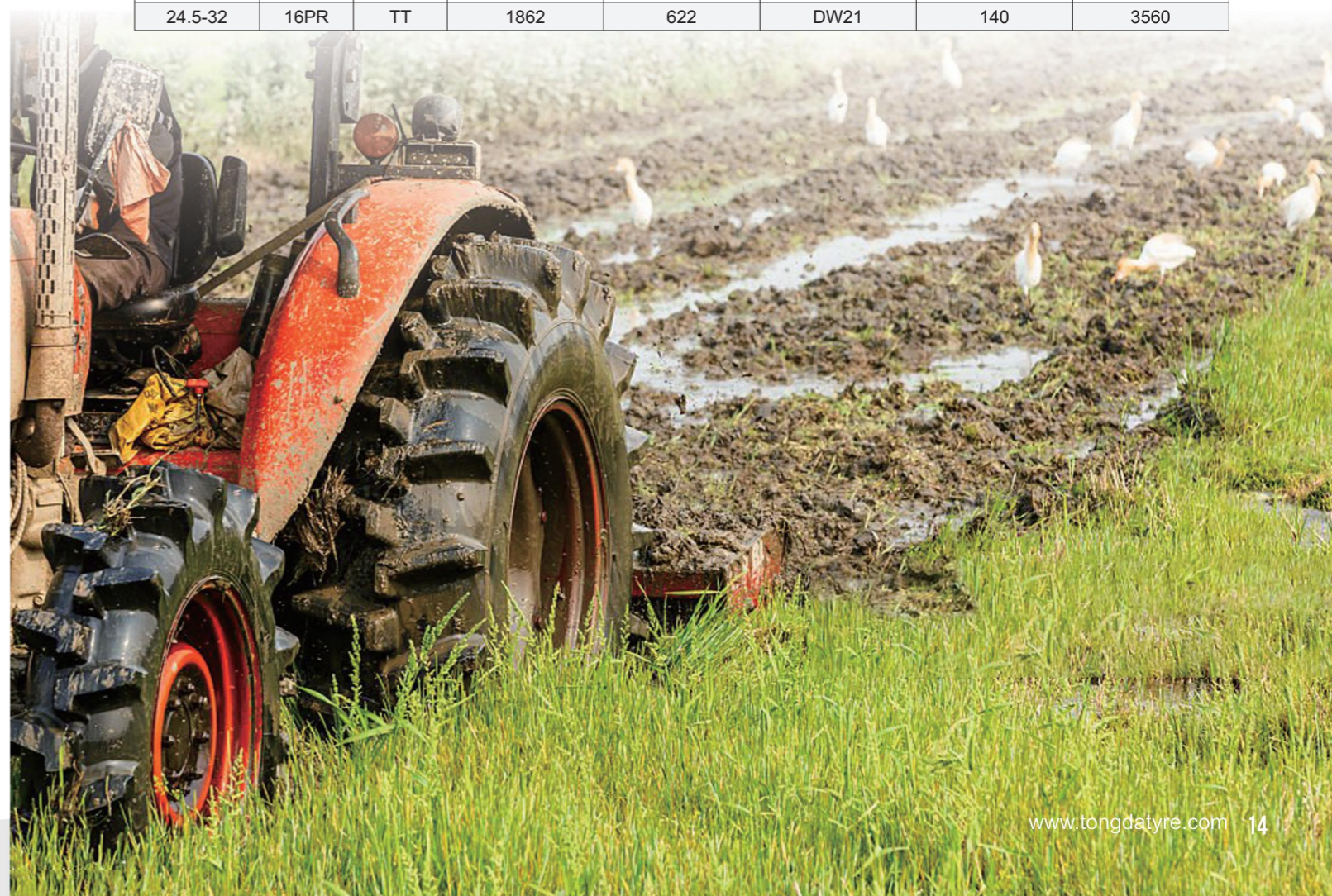
SIZE	PR	TYRE	OVERALL DIAMETER[MM]	SECTION WIDTH[MM]	STANDARD RIM	INFLATED PRESSURE[KPA]	MAX LOAD[KGS]
11.2-24	8PR	TT	1105	285	W10	180	1045
11.2-38	8PR	TT	1459	285	W10	180	1150
13.6-24	8PR	TT	1210	345	W12	210	1545
14.9-24	8PR	TT	1265	378	W12	180	1850
16.9-24	8PR	TT	1335	429	W15L	200	1960
16.9-28	8PR	TT	1435	430	W15L	240	2575

## AGRICULTURAL TYRE



**R-2**

SIZE	PR	TYRE	OVERALL DIAMETER[MM]	SECTION WIDTH[MM]	STANDARD RIM	INFLATED PRESSURE[KPA]	MAX LOAD[KGS]
9.5-24	8PR	TT	1150	240	W8	240	1315
11.2-24	8PR	TT	1205	285	W10	210	1465
12.4-24	8PR	TT	1080	294	W11	180	1450
12.4-28	8PR	TT	1210	320	W10/W9	140	1650
13.6-24	10PR	TT	1210	350	W12	250	1910
14.9-24	8PR	TT	1265	378	W13	180	1760
14.9-28	8PR	TT	1415	378	W13	180	1940
18.4-30	10PR	TT	1550	467	W16L	230	2815
18.4-34	10PR	TT	1655	467	W16L	230	2970
18.4-38	10PR	TT	1784	467	W16L	230	3165
20.8-38	12PR	TT	1887	528	W18L	200	4000
23.1-26	12PR	TT	1662	587	DW20	170	3250
23.1-30	12PR	TT	1764	587	DW20	170	3450
23.1-34	12PR	TT	1850	590	DW20A	225	4500
24.5-32	16PR	TT	1862	622	DW21	140	3560





**R-1S**

## AGRICULTURAL TYRE

SIZE	PR	TYRE	OVERALL DIAMETER[MM]	SECTION WIDTH[MM]	STANDARD RIM	INFLATED PRESSURE[KPA]	MAX LOAD[KGS]
12.4-24	8PR	TT	1160	315	W11	230	1415
14.9-24	10PR	TT	1265	378	W13	180	1760
14.9-28	10PR	TT	13654	378	W13	140	1610
12.4-36	8PR	TT	1465	315	W11	280	1750
12-38	10PR	TT	1563	304	W11	140	1570
12.4-38	12PR	TT	1514	315	W11	320	1850
15.5-38	12PR	TT	1569	394	W14L	260	2120
16.9-30	12PR	TT	1485	429	W15L	230	2500
18.4-30	12PR	TT	1552	467	W16L	220	2900
18.4-34	12PR	TT	1654	467	W16L	220	3000
18.4-38	12PR	TT	1755	467	W16L	220	3250
18.4-42	12PR	TT	1857	467	W16L	220	3350
20.8-38	12PR	TT	1834	528	W18L	190	3550
24.5-32	16PR	TT	1803	622	DW21A	210	4500
30.5L-32	18PR	TL	1845	775	DW27	220	5800



**F-2 4 RIB**

## AGRICULTURAL TYRE

SIZE	PR	TYRE	OVERALL DIAMETER[MM]	SECTION WIDTH[MM]	STANDARD RIM	INFLATED PRESSURE[KPA]	MAX LOAD[KGS]
10.00-16	10PR	TT/TL	894	274	W8L	390	1280
11.00-16	10PR	TT/TL	965	315	W10L	345	1350



**F-2**

## AGRICULTURAL TYRE

SIZE	PR	TYRE	OVERALL DIAMETER[MM]	SECTION WIDTH[MM]	STANDARD RIM	INFLATED PRESSURE[KPA]	MAX LOAD[KGS]
6.50-16	8PR	TT/TL	760	170	4.50E	340	630
6.50-20	8PR	TT/TL	880	180	5.50F	420	865
7.5L-15	8PR	TT	745	208	6LB	370	840
7.50-16	8PR	TT/TL	810	205	5.50F	370	870
7.50-18	8PR	TT/TL	855	205	5.50F	370	945
7.50-20	10PR	TT/TL	928	215	5.50F	210	780
9.00-16	10PR	TT/TL	845	234	6.50H	400	1200
10.00-15	10PR	TT	855	276	8LB	240	1425
10.00-16	10PR	TT/TL	895	274	W8L	340	1325
11.00-16	10PR	TT/TL	965	315	W10L	310	1485



**I-1**

## AGRICULTURAL TYRE

SIZE	PR	TYRE	OVERALL DIAMETER[MM]	SECTION WIDTH[MM]	STANDARD RIM	INFLATED PRESSURE[KPA]	MAX LOAD[KGS]
7.60L-15	8PR	TT/TL	734	193	5.50	360	950
9.5L-14	8PR	TT/TL	735	240	7.00	300	1085
9.5L-15	8PR	TT/TL	750	240	7.00	300	1115
11L-14	8PR	TT/TL	745	275	8.00	250	1100
11L-15	10PR	TT/TL	775	275	8.00	250	1145
11L-16	10PR	TT/TL	795	275	8.00	250	1215
12.5L-15	12PR	TT/TL	823	315	10.00	250	1145
650-16	10PR	TT/TL	735	173	4.50E	410	920
7.50-16	10PR	TT/TL	788	211	5.50F	410	1215
9.00-16	10PR	TT/TL	845	231	6LB	360	1500
10.5/80-18	12PR	TT/TL	885	276	9.0	410	1950
26x12.00-12	12PR	TL	648	307	10.50I	140	810

## IMPLEMENT TYRE



**IMP-500**

SIZE	PR	TYRE	OVERALL DIAMETER[MM]	SECTION WIDTH[MM]	STANDARD RIM	INFLATED PRESSURE[KPA]	MAX LOAD[KGS]
20.5/70-16	16PR	TL	860	320	10.00	350	2850
16/70-20(405/70-20)	14PR	TL	1076	405	13.00	350	3250
16/70-24(405/70-24)	14PR	TL	1178	405	13.00	350	3550
10.0/75-15.3	12PR	TL	760	264	9.00	470	1700
	14PR	TL	760	264	9.00	550	1900
11.5/80-15.3	12PR	TL	867	290	9.00	410	1550
	14PR	TL	867	290	9.00	475	1700



**I-3**

## FLOTATION TYRE

SIZE	PR	TYRE	OVERALL DIAMETER[MM]	SECTION WIDTH[MM]	STANDARD RIM	INFLATED PRESSURE[KPA]	MAX LOAD[KGS]
26x12-12	6PR	TL	648	307	10.50I	140	810
400/60-15.5	16PR	TL	874	400	13.00	250	2900
550/45-22.5	16PR	TL	1070	550	16.00	280	4375
500/45-22.5	16PR	TL	1045	500	16.00	360	3750
500/60-22.5	16PR	TL	1172	500	16.00	320	4875
600/50-22.5	16PR	TL	1170	600	20.00	200	4375



**AG-200**

## IMPLEMENT TYRE

SIZE	PR	TYRE	OVERALL DIAMETER[MM]	SECTION WIDTH[MM]	STANDARD RIM	INFLATED PRESSURE[KPA]	MAX LOAD[KGS]
16.5/70-18	14PR	TT/TL	1065	425	W13	370	3200
15.5/65-18	10PR	TT/TL	980	395	W13	350	2275



## IMPLEMENT TYRE



**IMP-600**

SIZE	PR	TYRE	OVERALL DIAMETER[MM]	SECTION WIDTH[MM]	STANDARD RIM	INFLATED PRESSURE[KPA]	MAX LOAD[KGS]
10.0/75-15.3	12PR	TL	760	264	9.00	470	1700
10.0/80-12	10PR	TL	710	264	9.00	390	1295
11.5/80-15.3	12PR	TL	845	290	10.00	410	2180
12.5/80-15.3	14PR	TL	889	307	10.00	430	2650
12.5/80-18	12PR	TL	965	308	9.00	370	2650



**IMP-700**

## IMPLEMENT TYRE

SIZE	PR	TYRE	OVERALL DIAMETER[MM]	SECTION WIDTH[MM]	STANDARD RIM	INFLATED PRESSURE[KPA]	MAX LOAD[KGS]
405/70-20	14PR	TL	1076	405	13.00	350	3250
405/70-24	14PR	TL	1178	405	13.00	350	3550

## IMPLEMENT TYRE



**IMP-800**

SIZE	PR	TYRE	OVERALL DIAMETER[MM]	SECTION WIDTH[MM]	STANDARD RIM	INFLATED PRESSURE[KPA]	MAX LOAD[KGS]
15.5/80-24	14PR	TL	1262	394	13.00	300	2900
405/70-20	14PR	TL	1076	405	13.00	350	3250
405/70-24	14PR	TL	1178	405	13.00	350	3550
10.0/75-15.3	12PR	TL	780	264	9.00	390	1090
11.5/80-15.3	12PR	TL	867	290	9.00	410	1550

## IMPLEMENT TYRE



**IMP-900**

SIZE	PR	TYRE	OVERALL DIAMETER[MM]	SECTION WIDTH[MM]	STANDARD RIM	INFLATED PRESSURE[KPA]	MAX LOAD[KGS]
26×12-12	4PR	TL	660	305	10.50I	140	810
	6PR	TL	660	305	10.50I	140	810
31×15.5-15	8PR	TL	787	381	13.000	140	810

## TRUCK TYRE



**T-100**

SIZE	PR	TYRE	OVERALL DIAMETER[MM]	SECTION WIDTH[MM]	STANDARD RIM	INFLATED PRESSURE[KPA]	MAX LOAD[KGS]
6.50-16	12PR	TT	740	140	5.50F	630	1040
7.00-15	12PR	TT	750	200	5.50F	530	975
7.00-16	12PR	TT	785	200	5.50F	630	1215
7.50-16	12PR	TT	815	215	6.00G	730	1500

## TRUCK TYRE



**LUG**



**RIB**

SIZE	PR	TYRE	OVERALL DIAMETER[MM]	SECTION WIDTH[MM]	STANDARD RIM	INFLATED PRESSURE[KPA]	MAX LOAD[KGS]
500-12	8PR	TT	568	143	3.00B	400	485
550-13	8PR	TT	620	160	4J	420	565
560-13	6PR	TT	625	145	4J	170	475
600-14	8PR	TT	680	170	4 1/2J	420	685
600-16	10PR	TT	730	170	4.50E	530	860
650-14	8PR	TT	705	180	4 1/2J	420	785
650-15	8PR	TT	730	180	4.50E	420	830
650-16	10PR	TT	750	185	5.50F	530	975
700-15	10PR	TT	750	200	5.50F	530	1040
700-16	12PR	TT	775	200	5.50F	630	1220
700-20	12PR	TT	904	200	5.5	740	1580
750-15	12PR	TT	780	215	6.00G	630	1370
750-16	12PR	TT	805	215	6.00G	630	1405
750-20	14PR	TT	935	215	6.0	810	1885
825-16	14PR	TT	855	235	6.5H	630	1705
825-20	14PR	TT	974	235	6.5	810	2205
900-20	14PR	TT	1018	259	7.0	770	2575
1000-20	16PR	TT	1055	278	7.5	810	3000
1100-20	16PR	TT	1085	293	8.0	810	3270
1100-22	16PR	TT	1135	293	8.0	810	3480
1200-20	18PR	TT	1125	315	8.5	810	3730
1200-24	18PR	TT	1225	315	8.5	810	4195
11.2-25	14PR	TT	1055	293	8.25	810	3000

